



SULIS  
DOWN

# Land at Odd Down

---

*Wansdyke Management Plan*

*January 2018*



---

**WEST WANSDYKE/ODD  
DOWN  
ARCHAEOLOGICAL  
MANAGEMENT PLAN**

---

**LAND OFF COMBE HAY LANE  
ODD DOWN  
BATH**

**NOVEMBER 2017**

**Planning Authority:  
BATH & NORTH EAST  
SOMERSET COUNCIL**

**Author:  
RICHARD SMALLEY BA (Hons)  
MCIfA**

**&**

**PAUL CHADWICK BA FSA MCIfA**

**Report Status:  
DRAFT**

**Issue Date:  
NOVEMBER 2017**

**CgMs Ref:  
PC/RAJS/11591**

**© CgMs Limited**

No part of this report is to be copied in any way without prior written consent.

Every effort is made to provide detailed and accurate information, however, CgMs Limited cannot be held responsible for errors or inaccuracies within this report.

© Ordnance Survey maps reproduced with the sanction of the controller of HM Stationery Office.  
**Licence No: AL 100014723**

## **CONTENTS**

- 1.0 Introduction and Scope of Document
- 2.0 Relevant Policy and Guidance
- 3.0 Geology and Topography
- 4.0 Brief Monument History
- 5.0 Approach to Monument Management
- 6.0 Interpretation and Public Engagement
- 7.0 Actions for Phase 1
- 8.0 Actions for Subsequent Phases

Sources Consulted

## **LIST OF ILLUSTRATIONS**

- Fig. 1 – Site Location
- Fig. 2 – Odd Down Field Names
- Fig. 3 – Area for footpath improvements

### **LIST OF PLATES**

Plate 1 – Newark Sconce: an example of a large metal bridge crossing earthworks

Plate 2 – Crickley Hill Hillfort: an example of a small wooden bridge crossing earthworks

Plate 3 – Crickley Hill Hillfort: an example of a footpath cutting an earthwork and interpretation panels at earthwork remains

### **APPENDICES**

Appendix 1: Extract from ECUS Conservation Management Plan (Zone 17 South Stoke)

Appendix 2: BANES Outline Brief for Archaeological Management Plan

**N.B.** The illustrations are not to scale

© CgMs Limited

No part of this report is to be copied in any way without prior written consent.

**Every effort is made to provide detailed and accurate information, however CgMs Limited cannot be held responsible for errors or inaccuracies within this report.**

© Ordnance Survey maps reproduced with the sanction of the controller of HM Stationery Office

OS Licence No. 100014723

## **1.0 INTRODUCTION AND SCOPE AND PURPOSE OF DOCUMENT**

### **1.1 Introduction**

1.1.1 This Archaeological Management Plan (AMP) has been prepared by Richard Smalley and Paul Chadwick of CgMs Consulting on behalf of The Hignett Family Trust and Bloor Homes. The document sets out a management plan for the Scheduled Monument known as *Wansdyke: Section 1230yds (1120m) eastwards from Burnt House Inn* (NHLE 1007003 aka West Wansdyke), in relation to the allocation for a residential-led development under Policy B3a for land at Odd Down, Bath.

1.1.2 This AMP has been produced based on the findings of the West Wansdyke Conservation Management Plan (CMP), produced for Historic England in conjunction with Bath and North East Somerset Council (ECUS 2014), and discussions with Historic England (Mel Barge) and BANES (Richard Sermon). The purpose of the CMP was to build on the 1994-6 Management Plan and to address management issues and identify opportunities for enhancing the condition and reducing the vulnerability of the monument as a whole.

1.1.3 The CMP split the West Wansdyke Scheduled Monument into seventeen zones. This AMP is concerned only with part of the monument located within Zone 17 (Odd Down). Zone 17 is described as:

*"...subject to a substantial degree of impact, initially due to quarrying right up to it during the 19<sup>th</sup> and early 20<sup>th</sup> century, and subsequent urban development from the 1950s to the present day. This encroachment has likely impacted the potential for spread deposits beyond the line of the monument to survive, and in many areas has cut directly into the bank itself. In addition there has been an impact from increased erosion from foot traffic and vehicular trespass over and along the monument" (ECUS 2014).*

1.1.4 An extract from the CMP relating to Zone 17 is at Appendix 1.

### **1.2 Scope and Purpose of Archaeological Management Plan (AMP)**

1.2.1 The purpose of the AMP is to identify an appropriate strategy for the management of the archaeological remains that form part of the Scheduled West Wansdyke (NHLE 1007003), as shown in Figure 1. It is based clearly on the BANES Brief for a Monument Management Plan (August 15) at Odd Down and South Stoke which is

reproduced at Appendix 2. A draft AMP has been the subject of discussions with Historic England and BANES.

1.2.2 The landowner/developers of the allocation site have a role to play in consultation with Historic England and the Council for managing this section of West Wansdyke. The AMP has been drafted in response to the Outline Brief for a Monument Management Plan (see Appendix 2) which confirmed that the key objectives of the AMP are:

- Relocate the badgers from the sett currently damaging the monument
- Achieve successful crossing points for pedestrians over the monument
- Enhance the general public's understanding of the monument
- Encourage walkers not to walk along the earthwork itself
- Discourage the use of motorbikes and other vehicles on the monument
- Management of the vegetation on the monument
- Ensure the monument retains a setting that does not substantially harm its significance

1.2.3 By addressing the above, this AMP is taking steps towards tackling those impacts that have placed this section (Zone 17) of the Wansdyke on Historic England's Heritage at Risk Register.

1.2.4 This document relates to Phase 1 of the allocation site. The AMP will be updated to reflect later phases of development/application when they are forthcoming, and will set out measures that have been implemented as part of Phase 1 and those measures that are then proposed for the respective subsequent phase/s.

## **2.0 RELEVANT POLICY AND GUIDANCE**

### **National Planning Policy Framework**

2.1 In March 2012, the government published the National Planning Policy Framework (NPPF).

2.1.1 Section 12 of the NPPF, entitled *Conserving and enhancing the historic environment* provides policy for planning authorities, property owners, developers and others on the conservation and investigation of heritage assets. Overall, the objectives of Section 12 of the NPPF can be summarised as seeking the:

- Delivery of sustainable development
- Understanding the wider social, cultural, economic and environmental benefits brought by the conservation of the historic environment
- Conservation of England's heritage assets in a manner appropriate to their significance, and
- Recognition that heritage contributes to our knowledge and understanding of the past.

2.2 The Bath and North East Somerset Core Strategy was adopted in July 2014 and contains the following policy relating to the Site:

POLICY B3A: LAND ADJOINING ODD DOWN, BATH: STRATEGIC SITE ALLOCATION  
(ONLY ELEMENTS RELATING TO THE WANSDYKE ARE REPRODUCED)

#### WANSDYKE SCHEDULED MONUMENT

- WITHIN THE ALLOCATION, AVOID BUILT DEVELOPMENT IN THE FIELD IMMEDIATELY TO THE SOUTH OF THE WANSDYKE. TO MITIGATE IMPACTS, TREE PLANTING SHOULD BE RETAINED AS INDICATED ON THE CONCEPT DIAGRAM.
- A MANAGEMENT PLAN SETTING OUT A STRATEGY FOR THE LONG-TERM AND EFFECTIVE MANAGEMENT OF THE MONUMENT INCLUDING DETAILED MEASURES FOR ITS POSITIVE ENHANCEMENT WILL BE DEVELOPED IN CONSULTATION WITH ENGLISH HERITAGE AND FORM PART OF ANY DEVELOPMENT PROPOSALS. THIS SHOULD INCLUDE A RECREATIONAL AND MOVEMENT SOLUTION WHICH SERVES THE COMMUNITY AND MINIMISES HARM TO THE SCHEDULED MONUMENT.
- LIMIT DEVELOPMENT HEIGHT AND DENSITY IN MORE PROMINENT AREAS, SUCH AS HIGHER GROUND AND DEVELOPMENT EDGES.

- LIMIT LIGHTING COLUMN HEIGHTS TO THAT OF THE DEVELOPMENT TO MINIMISE VERTICAL FEATURES WITHIN THE VIEW FROM THE WANSDYKE.

2.3 The Bath and North East Somerset Placemaking Plan contains the following heritage policies relevant to this Chapter:

Policy HE2: Somersetshire Coal Canal and The Wansdyke

Development adversely affecting the physical remains and/or historic routes of the Wansdyke or Somerset Coal Canal, as defined on the Policies Map, and/or their setting, will not be permitted unless it can demonstrate appropriate mitigation and/or enhancement consistent with Policy HE1.

### **3.0 GEOLOGY AND TOPOGRAPHY**

#### **3.1 Geology**

3.1.1 The solid geology of the West Wansdyke at Odd Down comprises Limestone of the Chalfield Oolite Formation. No superficial deposits are recorded (British Geological Survey, Map 265 1990).

#### **3.2 Topography**

3.2.1 The Scheduled Wansdyke is located on the northern edge of a wide, prominent ridge with a sharp break in slope to the north down into the Avon Valley and the 'bowl' within which the City of Bath sits. To the south, the plateau breaks slightly less abruptly and levels descend into the valley of the Cam Brook. The linear West Wansdyke monument follows the northern (east-west) axis of this plateau and rises in its central section, with a height Above Ordnance Datum (AOD) ranging from 168m AOD in the west, 172m AOD in the central section and 165m AOD at its eastern limit (Fig. 1).

#### **4.0 BRIEF MONUMENT HISTORY**

- 4.1 The historic context of the Scheduled West Wansdyke is discussed in detail in the Conservation Management Plan prepared on behalf of English Heritage (ECUS 2014) extract at Appendix 1. That report studied historical documents, boundaries, field and place-name evidence, considers the roads and lanes in the surrounding area, and provides a description of the archaeological investigations undertaken along its length. This information is not repeated in this AMP; however a brief history is outlined below.
- 4.2 The Wansdyke is a large, long, linear monument that stretches over several kilometres from the Avon Valley, south of Bristol to Savernake Forest, near Marlborough, Wiltshire. This assessment considers only the monument known as West Wansdyke, at Odd Down and officially referred to as *Wansdyke: Section 1230yds (1120m) eastwards from Burnt House Inn*.
- 4.2.1 The West Wansdyke Scheduled Monument at Odd Down includes part of this linear boundary which survives as an earthwork bank, approx. 1.0m high, with a natural, sharp break in slope to the north which serves in lieu of a ditch. The scheduled area is, in places, heavily vegetated and is topped by a public footpath.
- 4.2.2 The detailed chronology of the monument is unknown, although current theories favour a sub-Roman/Post-Roman date when it served as a frontier, both military and political, associated with the emerging chiefdoms and kingdoms of early medieval England. The name of the monument is believed to be a derivation of 'Woden's Dyke'.
- 4.3 Historic Maps 1890s-1990 (Figs. 3 a/b/c) help show growth of development of Wansdyke.
- 4.4 Recent archaeological evaluation, comprising geophysical survey and trial trenching, did not identify any archaeological finds or features directly relating to Wansdyke in the fields know as Great Broad Close and 30 Acres North (see Fig. 2), located directly to the south of the eastern part of the Scheduled Monument.

## **5.0 APPROACH TO MONUMENT MANAGEMENT**

### **5.1 General**

5.1.1 The Scheduled West Wansdyke at Odd Down is currently in a relatively poor state of preservation, with the monument exposed to erosion caused by footfall from users of the public footpath and encroachment of local residents' gardens onto the earthwork from the north. The Scheduled Monument is further damaged by periodic fly-tipping, vehicular activity and badger setts.

5.1.2 The monument is identified by Historic England as being 'at risk' (Heritage at Risk Register October 2016) and its condition is described as being *generally unsatisfactory with major localised problems*. The current trend for its long-term preservation is identified as *declining*.

5.1.3 This AMP therefore identifies the problems surrounding the preservation and best management of the Scheduled Monument and seek to identify solutions to be implemented as appropriate within each phase of the development on the allocation site.

### **5.2 Management Issues**

5.2.1 In relation to development on the allocation site, the landowner/developer has a role to play in consultation with Historic England and the Council for managing this section of West Wansdyke. As described in the Outline Brief for a Monument Management Plan (see Appendix 2) the key objectives of the AMP are:

- Relocate the badgers from the sett currently damaging the monument
- Achieve successful crossing points for pedestrians over the monument
- Enhance the general public's understanding of the monument
- Encourage walkers not to walk along the earthwork itself
- Discourage the use of motorbikes and other vehicles on the monument
- Management of the vegetation on the monument
- Ensure the monument retains a setting that does not substantially harm its significance

### **5.3 Management Solutions**

#### **Relocation of Badger Setts**

- 5.3.1 Burrowing animals, such as badgers, are a major cause of damage to archaeological remains, and the presence of a large sett is known on the eastern section of the West Wansdyke Scheduled Monument.
- 5.3.2 The collapse of tunnel systems and the spread of excavated material from tunnel entrances act as a form of disfigurement of the characteristics of the monument. This can be detrimental to visitor appreciation of the monument as well as to its research potential by field survey. Furthermore, the creation of tunnels destabilises the earthwork and the exposure of bare surfaces can leave the remains susceptible to erosion from livestock, wind and water. Such disturbance can lead to the destruction of buried remains and result in the loss of archaeological information (English Heritage 2004).
- 5.3.3 This AMP suggests the relocation of the badgers from the current sett on the Wansdyke to a new location elsewhere in the locality, positioned a substantial distance from the monument to prevent their return. The site of the former sett would need to be badger-proofed through the installation of a mesh, fencing, or badger gates.
- 5.3.4 Badgers are a protected species under the Wildlife and Countryside Act (1981) and the Badgers Act (1992). As a result, advice would be sought from appropriate ecological expertise in order to progress the badger controls necessary for the preservation of the Scheduled Monument at the point at which the relocation of the badger sett forms part of any planning application proposal.

#### **Crossing Points**

- 5.3.5 Residential development at Odd Down would result in an increase of pedestrian footfall on the monument crossings that currently exist. These crossings have already eroded the monument considerably and it is considered that the increased footfall created by the allocation as a whole would increase damage to the monument.
- 5.3.6 This AMP therefore identified the need for the installation of crossing points over the monument that would successfully reduce erosion of the earthwork currently being caused by pedestrian footfall. The Illustrative Comprehensive Masterplan (ICM) identified the potential location for the new crossing point.

5.3.7 Crossing points could range from the erection of a bridge over the earthwork, to the construction of a cutting within the monument itself. Both options would have impacts on the physical remains of the Wansdyke and on its setting. Options are discussed further below:

*Bridge over the monument*

5.3.8 Subject to prior Scheduled Monument Consent (SMC) the construction of a bridge over the monument would prevent further erosion of its physical remains. There would be a small amount of physical impact within the scheduled area for the bridge's supporting feet etc., however it is considered that such an impact could be mitigated through a suitable programme of archaeological works.

5.3.9 The materials to be used for the bridge requires consideration as the use of metal would have an urbanising effect and therefore alter on the monument's setting. However, the use of wood is not as long-lasting as metal and would require a programme of maintenance and repair.

5.3.10 A bridge over the monument should be low-profile in form materials and colour, so as to reduce the visual impact on the Wansdyke's setting. The ECUS report suggests that steps should be installed in erosion areas. A stepped bridge would discourage the use of bikes over the monument, however it would also create access issues for the less able and pedestrians with pushchairs etc.

5.3.11 Plate 1 shows a bridge facilitating access to a Scheduled Monument whilst removing footfall erosion. Although the scale of this bridge is inappropriate for Odd Down it serves to illustrate a possible solution.

5.3.12 Plate 2 shows a timber structure which is probably closer to the scale of structure required at Odd Down.

*Cutting through the monument*

5.3.13 The installation of a cutting through the monument earthwork would provide a step free access. The creation of a cutting in the monument would inevitably have a large impact on the monument's physical remains. However, such an impact could be reduced by placing the cutting in an area of the monument where high levels of erosion have already occurred. It would provide an opportunity to undertake a programme of archaeological works to further understand the origins and development

of the monument. Because of the drop in levels to the north, a cutting through the monument would increase design options in relation to gradients of access ramps.

- 5.3.14 The cutting in the monument would expose a section/profile of the monument which, in conjunction with interpretation boards, would enable the community to interpret its make-up and function and its possible origins.

#### **Reduce/Remove Erosion by Walkers on the Monument**

- 5.3.16 A public footpath runs along the eastern part of the Odd Down/South Stoke section of the scheduled area of West Wansdyke. The use of this footpath causes erosion through repeated use. This wear is often limited to specific routes, known as desire lines, where access is not restricted or to particular focal points that attract visitors and pinch points, such as a gateway.
- 5.3.17 In areas of unmanaged long-term wear, the entrenching of routes will occur and will damage the archaeological integrity of the monument through direct erosion of the archaeological deposits. In addition, the areas of bare ground created by such use can become prone to other management problems such as livestock erosion, colonisation by weeds and scrub, or burrowing animals.
- 5.3.18 The footpath along the eastern section of West Wansdyke is currently marked by a worn desire line and gets very wet and muddy during periods of inclement weather. As part of the AMP, a new footpath will be constructed, providing a preferred route for pedestrians and so reducing the erosion of the monument. This footpath will need to be hardwearing, but also should also suit the semi-rural environment of the area to avoid urbanising the monument's setting. Both Historic England and BaNES (including the Archaeological Officer and Highways department) will be consulted regarding what materials would be most suitable for this.
- 5.3.19 Reducing the impacts of erosion on the monument by walkers will also be achieved through the improvements to existing, and provision of new, footway and cycle links within and across the allocation area.

#### **Discourage the Use of Motorbikes and Other Vehicles on the Monument**

- 5.3.20 The use of the monument for illegal off-road motor-biking is also risking the archaeological integrity of its physical remains in a similar manner to that described above.

5.3.21 The re-routing of the footpath and the installation of gates at strategic points along the route of the monument should deter motor-biking.

#### **Management of Vegetation**

5.3.22 The presence of trees, scrub, bracken and other types of vegetation has the potential to effect the long-term preservation of the physical earthwork remains of the West Wansdyke, mainly through root disturbance.

5.3.23 The scrub currently located on the Scheduled Monument at Odd Down is considered to have low intrinsic value in terms of botanical conservation. Therefore, this AMP proposes its removal or reduction.

5.3.24 Removal or reduction will be achieved through cutting with follow-up treatment, such as annual cutting of re-growth. The application of herbicide as a spray may also be used on scrub less than 1.5m tall. It may be necessary to retain some vegetation close to the Primary School to allow for privacy screening.

5.3.25 If any parts of the scrub are considered to be of nature conservation value, the vegetation will be removed from archaeologically sensitive areas only.

#### **Ensuring the Monument Retains a Suitable Setting and that Development does not cause Substantial Harm to it's Significance**

5.3.26 The West Wansdyke Scheduled Monument is of national significance. The conservation and enhancement of the significance of this heritage asset is afforded protection by statute and national and local planning policy. Any harm that may result from the proposed development on the significance of this nationally important heritage asset, or its setting will, in accordance with NPPF, be given great weight in the decision making process. This will have to be balanced by an appropriate package of heritage-related monument management measures within the current allocation.

#### **Anti-Social Behaviour**

5.3.28 The monument is currently subject to an amount of anti-social behaviour. This includes littering and fly-tipping, as well as the illegal off-road motor-biking as mentioned above,

5.3.29 The installation of gates and notices at strategic points will serve to discourage the use of motor-bikes etc. on the scheduled area. It is also considered that new interpretation

signs will help the general public understand, and therefore appreciate, the monument more fully, which may lead to it being treated with more respect and care.

5.3.30 The involvement of the local community, including the local schools, in any archaeological works related to the monument will help engender a sense of 'ownership' of the monument. This will help encourage the public to treat the monument with more care, but also to report any anti-social behaviour to the relevant authorities.

## **6 INTERPRETATION AND PUBLIC ENGAGEMENT**

- 6.1.1 There are currently two notices relating to the monument on the Odd Down/South Stoke section of West Wansdyke; one, a detailed information board is located near the western end, near Combe Hay Lane and a second briefer notice is sited on Milford Road.
- 6.1.2 The current information boards will be enhanced, coinciding with one of the crossing points over/through the monument. The possibility of interpretation panels providing details of the monument's construction and function has been discussed in relation to the installation of cuttings above.
- 6.1.3 The construction of a bridge over the monument, or a cutting through it, will inevitably involve a programme of archaeological works. There may be scope to include an element of outreach during these works, enabling members of the local community to learn more about the Wansdyke. For example, members of the public and local schools may be invited to take part in/witness the excavations; or the results of any excavations could be made available to the general public through publishing of reports, or the giving of presentations.
- 6.1.4 There may be scope for the reconstruction of the monument, particularly in the area that has been eroded away by badger activity. The local schools will be invited to take part in these activities.

## **7.0 ACTIONS FOR PHASE 1**

- 7.1 Following a site meeting with Historic England (Mel Barge) and BANES (Richard Sermon) on 3<sup>rd</sup> November 2017, the Actions relevant to Phase 1 were agreed as follows:
- i) Approval of footpath methodology, width and materials
  - ii) Contribution for the archaeological excavation of the unofficial crossing (leading to Sainsbury's supermarket) through the monument and other points along the Wansdyke route identified under item iii) below, as deemed necessary.
  - iii) Contribution for the construction of improved footpath from the gate adjacent to Sulis Meadows to the unofficial crossing over the Scheduled Monument leading to Sainsbury's supermarket and also the crossing point, utilising the 'cutting' option.
- 7.2 The client will make a contribution for the archaeological excavation of the unofficial crossing (and other points along the Wansdyke route under item iii) above, as deemed necessary) that leads to the Sainsbury's supermarket. The excavation would allow for archaeological investigation of the monument as well as an element of public engagement. It is recognised that any archaeological investigation of the monument would require Scheduled Monument Consent (SMC) and would have to be undertaken in accordance with a Written Scheme of Investigation (WSI) that has been approved by the Local Authority Archaeologist.
- 7.3 The client will liaise with the Local Authority and Historic England to agree a methodology and suitable materials for the improvement of the footpath that currently runs along part of the Wansdyke Scheduled Monument. For Phase 1, improvements to the footpath are restricted to the section between the gate at Sulis Meadows to the unofficial monument crossing leading to Sainsbury's supermarket (See figure 3). Prior consultation with the Local Authority Archaeologist and Historic England has confirmed that materials such as 'Cotswold Path Gravel' (as raised/unwashed or graded), as seen within the tree belts to the south of the monument, are suitable for purpose. It is recognised that such materials would need to be approved with the Local Authority Highways Officer. Once the width, materials and methodology have been agreed, a sum will be calculated and paid to the LPA to enable the footpath improvements and crossing to take place in the agreed area.

- 7.4 As the crossing is in part within a 3<sup>rd</sup> party land ownership (and thus out of the client's control), the client can only seek to make a contribution for the excavation and construction of the crossing, and as the footpath works along the Wansdyke would be carried out at the same time as the crossing works it is therefore proposed that a contribution is made for the entire excavation and construction works of path and crossing.
- 7.5 Trigger points for fulfilling obligations under 7.1 are to be agreed with the LPA and secured by either S106 or Planning Condition.

## **8.0 ACTIONS FOR SUBSEQUENT PHASES**

8.1 Following a site meeting with Historic England (Mel Barge) and BANES (Richard Sermon) on 3<sup>rd</sup> November 2017, the following Actions will be undertaken during subsequent phases:

- i) Agree and implement/contribute to a methodology for the management of the vegetation growing along the Wansdyke.
- ii) Liaise with Historic England and BANES regarding the design of, and implementation of, interpretative panels.
- iii) Liaise with Natural England, Historic England and BANES to agree a suitable methodology to reduce/stop the damage caused by badgers to the Wansdyke.
- iv) Liaise with Historic England and BANES to agree and implement/contribute to a methodology/design for the construction of strategic gates in order to discourage motorbikes and other vehicles from driving on the monument.

8.2 Pre-Application discussions will be held prior to subsequent phases to determine which of the above are relevant to that particular phase.

## **SOURCES CONSULTED**

### **Bibliographic**

Bath and North-East Somerset Council. 2015. *The Wansdyke at Odd Down and South Stoke: Outline Brief for a Monument Management Plan*

CgMs. 2016. *Historic Environment Settings Impact Assessment: West Wansdyke, Odd Down, Bath*

Cotswold Archaeology. 2015. *Land off Combe Hay Lane, Odd Down, Bath, Bath and North East Somerset: Archaeological Evaluation*. CA Report 15734.

DCMS, 2010. Scheduled Monuments. Identifying, protecting, conserving and investigating nationally important archaeological sites under the Ancient Monuments and Archaeological Areas Act 1979 March 2010

Department of Communities and Local Government. 2014. *Planning Practice Guidance*

Department for Communities and Local Government. 2012. *National Planning Policy Framework* DCLG

Department of Communities and Local Government/Department of Culture Media and Sport/English Heritage. 2010. *PPS5 Planning for the Historic Environment: Historic Environment Planning Practice Guide*

ECUS (2014) *West Wansdyke: Conservation Management Plan*

English Heritage. 2004. *Managing Earthwork Monuments*

English Heritage. 2008. *Conservation Principles, Policies and Guidance for the Sustainable Management of the Historic Environment*. London: English Heritage

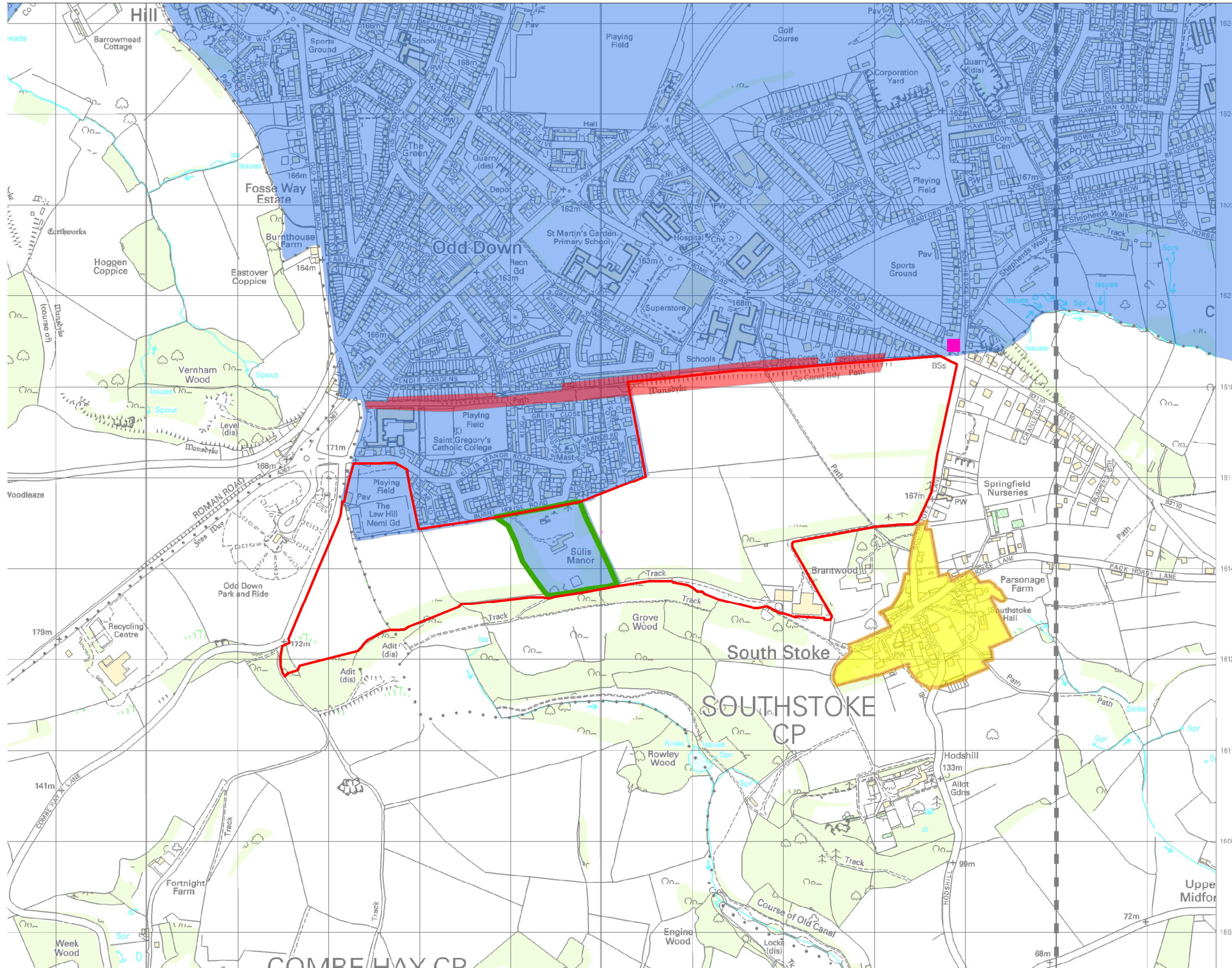
English Heritage. 2011a. *The Setting of Heritage Assets: English Heritage Guidance*. London: English Heritage

English Heritage. 2011b. *Seeing the History in the View: A Method for Assessing Heritage Significance within Views*. London: English Heritage

English Heritage. 2012. *Comparison of PPS5 Policies with Historic Environment-Related Policies in the NPPF – Parts 1 & 2*. unpublished document

Highways Agency. 2007. *Design Manual for Roads and Bridges* (HA 208/07, Volume 11, Section 3, Part 2).

Stratascan Ltd. 2014. *Geophysical Survey Report: Odd Down, Bath. Report No. J6375*.




Additional information:

- Key**
- Site Location
  - World Heritage Site
  - Wansdyke Scheduled Monument
  - Cross Keys PH
  - South Stoke Conservation Area
  - Sulis Manor

Project title:  
Land off Combe Hay Road  
Odd Down, Bath

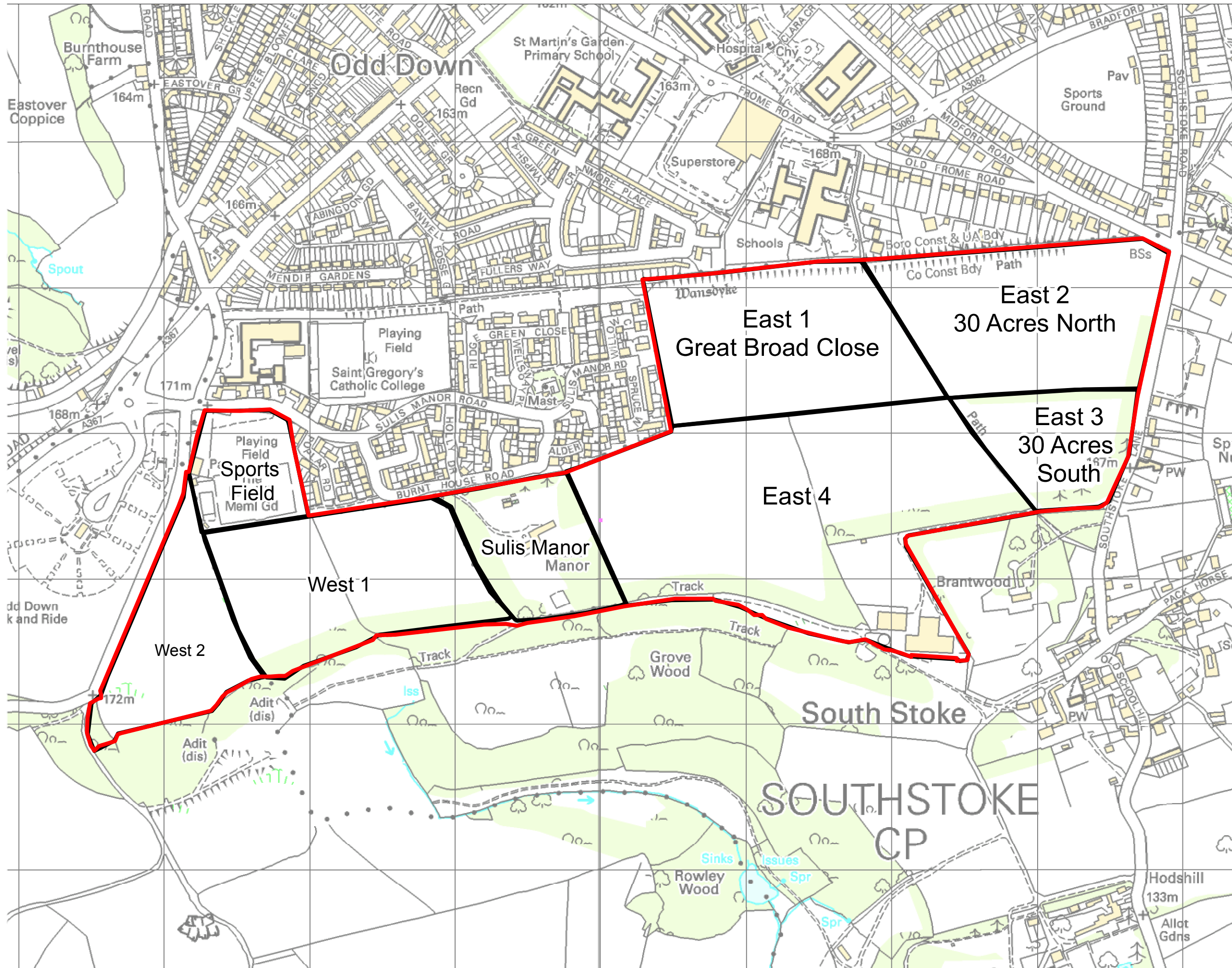
 <p><b>Cgms</b> CONSULTING</p>	<p>London Cheltenham Kettering Newark Birmingham</p> <p>www.cgms.co.uk</p> <p><i>Planning &amp; Development Archaeology &amp; Historic Buildings</i></p>
---	--

Scale at A3: 1:8,000



Date printed: 24/10/2013	Drawn by: RAJS Checked by: JS
-----------------------------	----------------------------------

Figure 1: Site Location



Additional information:

**Key**

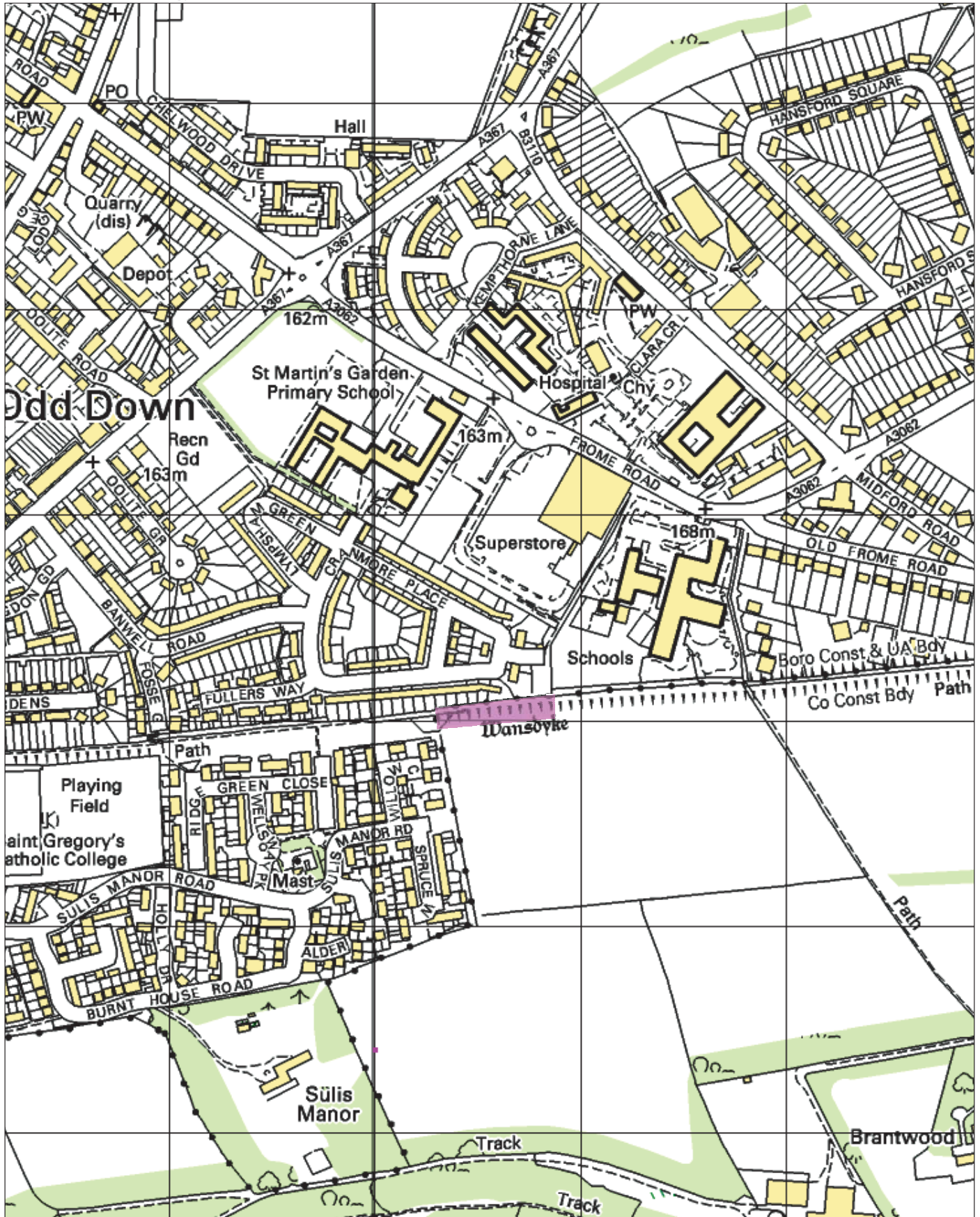
Project title:  
Land off Combe Hay Road  
Odd Down, Bath

**Cgms** CONSULTING  
 London  
 Cheltenham  
 Kettering  
 Newark  
 Birmingham  
 www.cgms.co.uk  
 Planning & Development  
 Archaeology & Historic Buildings

Scale at A3: 1:5,000  
 0 150 m

Date printed: 24/10/2013  
 Drawn by: RAJS  
 Checked by: JS

Figure 2: Odd Down Field Names (based on LUC study, figure in Appendix 3)



Legend

- Area for footpath improvements (Phase I)



Not to Scale:  
Illustrative Only

Figure 3:  
Area for footpath  
improvements  
(Phase I)



Plate 1: Newark Sconce: an example of a large metal bridge crossing earthworks



Plate 2: Crickley Hill Hillfort: an example of a small wooden bridge crossing earthworks

---



Plate 3: Crickley Hill Hillfort: an example of a footpath and interpretation panels at earthwork remains

---

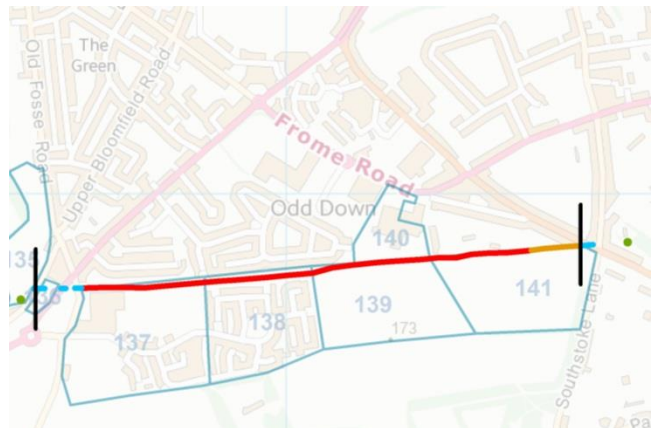
**Appendix 1: Extract from ECUS Conservation Management Plan (Zone 17 South  
Stoke)**

## A367 to Southstoke Lane

## Zone 17

**Length:** 1.33 km  
**NGR From:** ST 73430 61761  
**NGR To:** ST 74748 6181869  
**1995 MP Field No.:** 136 to 141

**National Heritage List No.:** 1007003  
**Scheduled Monument No.:** BA 93  
**Bristol & NE Somerset HER No.:** 6034-6035



### Photos:



### Description:

The uncharacteristic straightness of this section of Wansdyke has been identified as indicating that this stretch was either originally a Roman road, had formed part of un-associated defensive works, or respected a previously unknown early-medieval boundary (1995, 22-23). Topographical analysis of this section highlights that it was situated across a level plateau, diverging from the rest of the monument that generally follows the contours of the hills, and provides an additional justification for its differences.

## A367 to Southstoke Lane

## Zone 17

Archaeological monitoring on the northern side of the monument has not identified the presence of a ditch, although this may relate to later disturbance.

This section of Wansdyke has been subject to a substantial degree of impact, initially due to quarrying right up to it during the 19<sup>th</sup> and early 20<sup>th</sup> century, and subsequent urban development from the 1950s to the present day. This encroachment has likely impacted the potential for spread deposits beyond the line of the monument to survive, and in many areas has cut directly into the bank itself. In addition there has been an impact from increased erosion from foot traffic and vehicular trespass over and along the monument.

<b>Current Land use:</b>	Field 136: Gardens and waste; Field 137: Footpath, buildings and playing fields; Field 138: Green space and housing development Field 139: Arable; Field 140: Playing fields; Field 141: Arable.	<b>Land use in 1995:</b>	Field 136: Gardens and waste; Field 137: Footpath, buildings and playing fields; Field 138: Grassland; Field 139: Arable and grassland; Field 140: Playing fields; Field 141: Arable and grassland.
--------------------------	---	--------------------------	--

**1995 Survival:** Earthwork

**1995 Condition:** Field 136: Slight bank, cut back by construction works;  
Field 137-139: Bank evident with hedge and fence on summit and cut back by adjacent gardens;  
Field 140: Bank evident with hedge and fence on summit. Not cut back by development, but no ditch visible.  
Field 141: Spread bank evident with hedge and fence on summit. No ditch visible.

**1995 Vulnerabilities:** Field 136: Development;  
Field 137: Erosion along footpath, vegetation growth and gardens;  
Field 138-139: Erosion along footpath, vegetation growth, gardens and cultivation;  
Field 140: Vegetation, and erection of fence within probable ditch area;  
Field 141: Footpaths crossing and on the bank as well as hedges and garden walls.

**1995 Management Recommendations:** Field 136: Management of waste ground and scrub;  
Field 137-141: Management scheme for footpath and surrounding area.

**Current Survival:** Earthwork & Conjectural Evidence

**Current Condition:** Very bad

**Condition Assessment:** Critical

**Current Vulnerability:** built development, scrub, badgers, dumping, foot erosion, arable clipping

**Stability:** Rapid decline

**Current Management Recommendations:** Field 136: Management of waste ground and scrub;  
Field 137-141: **PRIORITY ACTION-** Monitor badger sett and control as necessary, repair erosion scar from informal footpath with green paths, floating platform steps rather than hard landscaping, consider surfacing solutions for footpath along monument remove fly tipping, enforcement of damage to SM

## **Appendix 2: BANES Outline Brief for Archaeological Management Plan**

## **The Wansdyke at Odd Down and South Stoke**

### **Outline Brief for a Monument Management Plan**

#### **Description and Location**

The Wansdyke refers to two separate linear earthworks, the East Wansdyke, and the West Wansdyke. The East Wansdyke lies within Wiltshire, and The West Wansdyke lies within the Unitary Authority of Bath and North East Somerset and runs roughly from south of Bristol in the west, to south of Bath in the east.

It survives in discontinuous sections approximately 12km in total, and is characterised by a substantial earthen bank with a ditch on its northern side. Although comparatively little is known about it, existing evidence suggests that it was constructed between the end of the Roman rule in Britain and the early middle ages (c.410 to c.800 AD). It is believed to have operated as a frontier boundary marker.

#### **Significance**

Dating to the post-Roman period, the West Wansdyke represents a period of history of which comparatively little is known due in part to a lack of documentary evidence. The fact that it is little understood gives it particular resonance as there remains much potential for greater understanding. This can only be achieved if the surviving sections are preserved in a favourable condition. Many sections of The West Wansdyke (including Odd Down and South Stoke) are designated Scheduled Ancient Monuments due to its overall national importance. Those sections of the Wansdyke that are not scheduled but are demonstrably of equivalent significance to the scheduled sections will be subject to the same policies for designated heritage assets (see NPPF paragraph 139).

#### **Current Problems**

The Odd Down and South Stoke section of the Wansdyke has suffered from a number of management issues which include:

- Burrowing animals (badgers)
- Scrub and tree growth (lack of control and management)
- Erosion along/across official and unofficial footpaths (poor footpath condition)
- Encroachment of garden structures (gates and steps) into the monument
- Anti-social behaviour (ASB – littering, fly-tipping, illegal off-road motorbiking)
- Lack of interpretation (now partly addressed by SSPC information boards)

#### **Ownership and Responsibilities**

East Section (South Stoke) – land to the south is owned by the Hignett Trust and to the north by private residents (gardens) and B&NES (Three Ways School). South Stoke PC are responsible for maintenance of the public footpath under an agreement with B&NES, but not the monument.

West Section (Odd Down) – The open space and monument at Sulis Meadow is owned by B&NES (Parks). Land to the north is owned by Knightstone Housing Association and private residents (gardens). B&NES are responsible for maintenance of the public footpath.

There are three permitted/regularised crossings over the Wansdyke: (a) at the end of Fosse Gardens, (b) between 9 and 11 Fullers Way, and (c) between Three Ways School and 182 Old Frome Road.

## **West Wansdyke Conservation Management Plan**

In 2014 English Heritage (now Historic England) commissioned a conservation management plan (CMP) for the West Wansdyke (Reference: B&NES HER Report: 2015/11). The latest draft of the CMP will be provided for background information and to set the wider context for the local monument management plan (MMP) at Odd Down and South Stoke.

### **F. Structure and Scope of Monument Management Plan**

The preparation of the local MMP is required to support the preparation of the Masterplan (in line with Core Strategy policy B3a Placemaking Principle 6).

The local MMP is not required to repeat the work of the wider CMP, but rather to provide a practical management regime for monument at this location. The MMP should cover the whole length on monument from the Cross Keys public House to the Fosse Way, with the main objective being the protection, maintenance, enhancement and interpretation of the monument. As guidance the following structure is suggested:

1. Introduction – to include planning and policy background (scheduled monument and B&NES core strategy).
2. Brief Monument History – referencing back to the West Wansdyke CMP.
3. Geology – map provided showing a fault line within the Great Oolite and Twinhoe Beds (Jurassic limestone) running east to west 130m to the south of the Wansdyke. Source: British Geological Survey (see local geology map).
4. Development History – agriculture, quarrying, housing, schools, etc.
5. Management issues – badgers, vegetation, erosion, encroachment, ASB.
6. Management solutions – to include monitoring of erosion, control of scrub and trees, and badger mitigation measures (expert advice and other consents will be required).
7. Reduce ASB – working with local community, housing association and police.
8. Management Programme – suggested five year renewable period with scheduled monument consent (SMC) for repeat works.

9. Interpretation and Public Engagement – to encourage community understanding, appreciation and ‘ownership’ of the monument.

## **Contacts**

Additional advice and support can be obtained from:

Mel Barge  
Inspector of Ancient Monuments  
Historic England  
Telephone: 0117 975 1300  
Email: [Melanie.Barge@HistoricEngland.org.uk](mailto:Melanie.Barge@HistoricEngland.org.uk)

Richard Sermon  
Senior Archaeological Officer  
Bath & North East Somerset Council  
Telephone: 01225 477651  
Email: [richard\\_sermon@bathnes.gov.uk](mailto:richard_sermon@bathnes.gov.uk)

---

Bath & North East Somerset Council  
14th August 2015

**Cgms**

[www.cgms.co.uk](http://www.cgms.co.uk)

Cgms